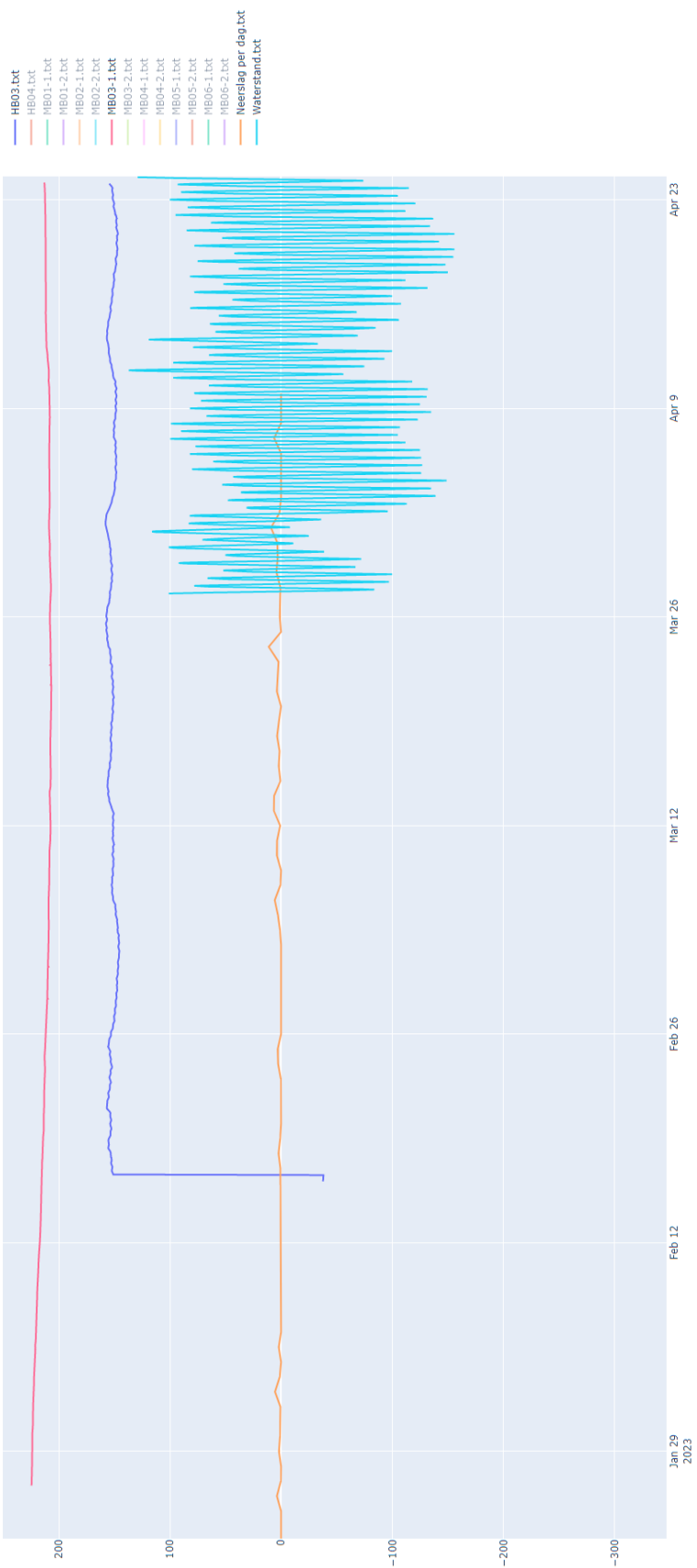
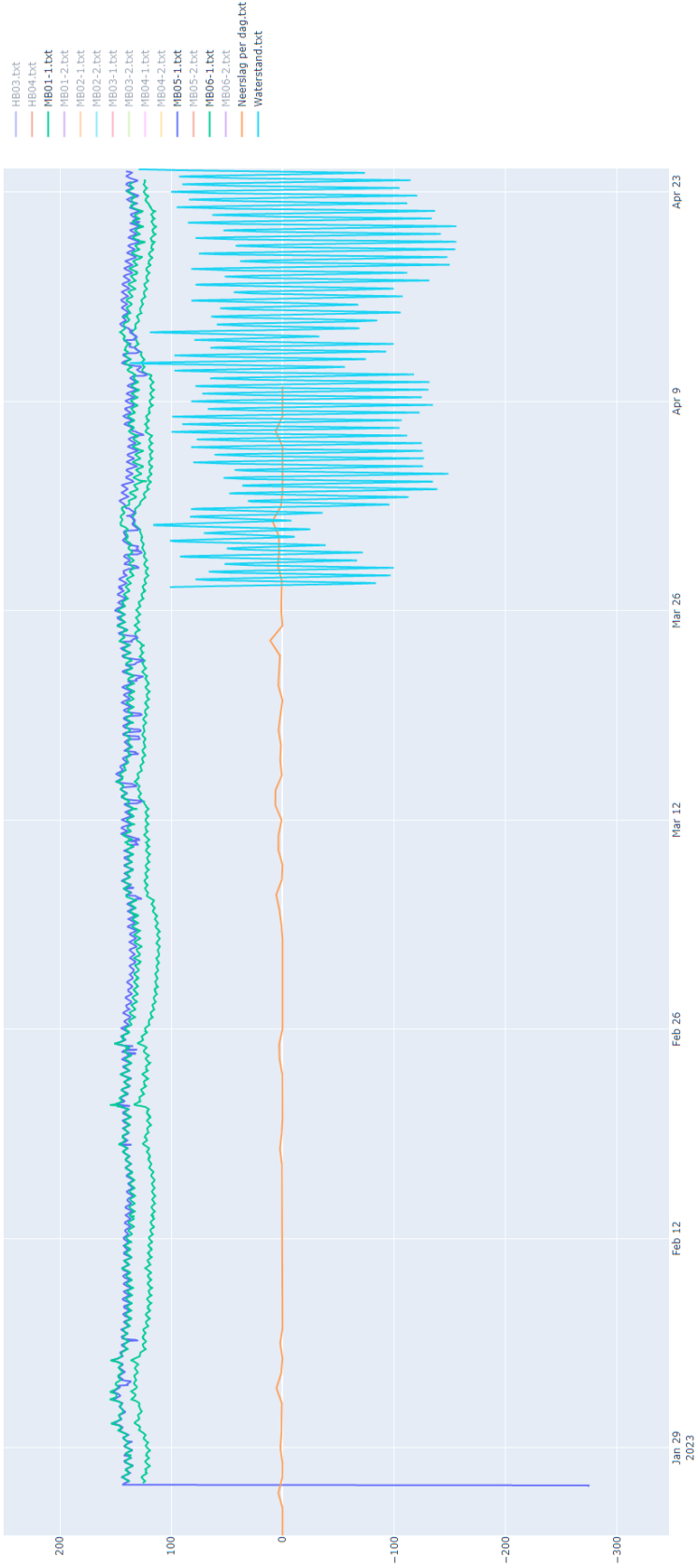


# AD.00216 - Analyse grondwaterstanden WB-kade Terschelling (april. 2023)

## Waterstanden in de toplaag:

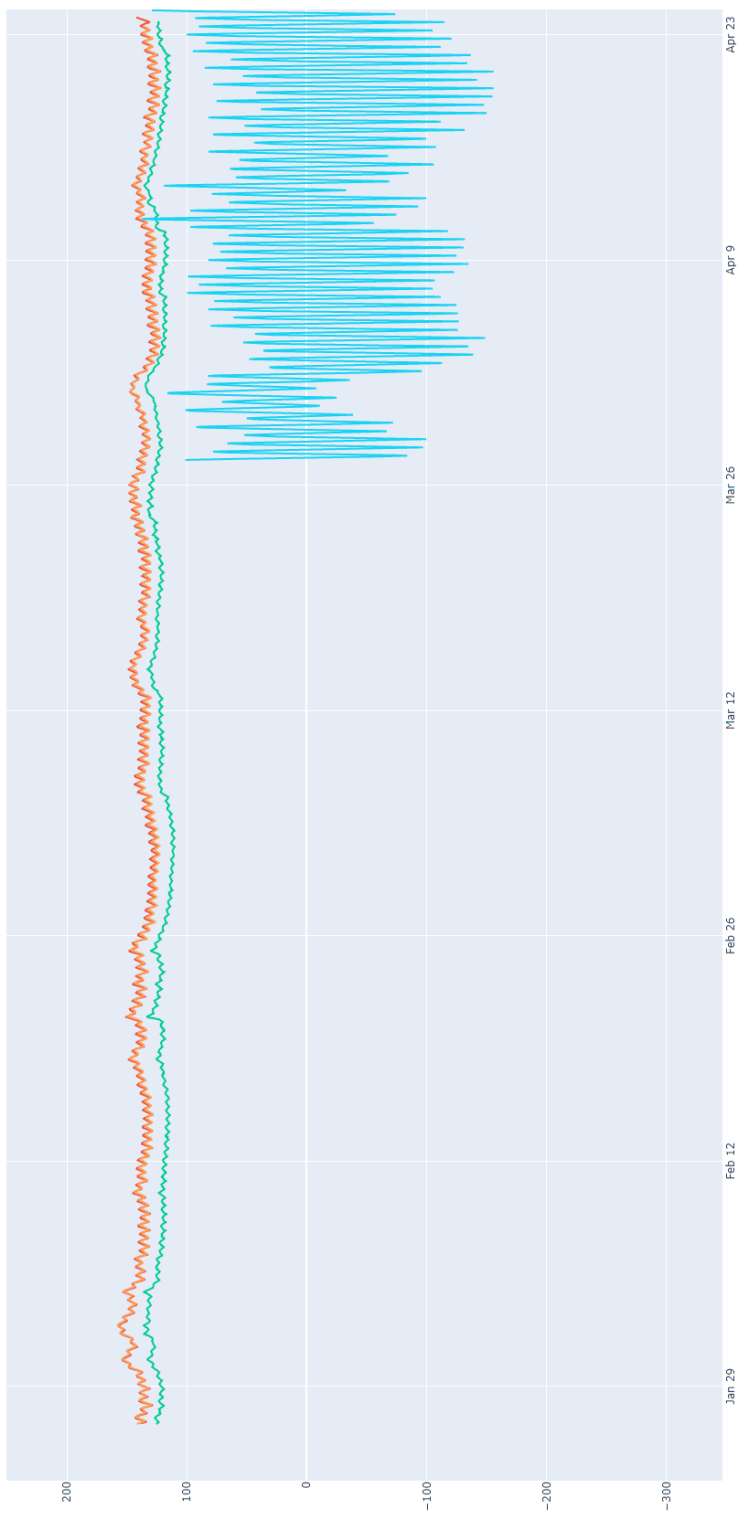


# Waterstand-metingen "voor" (tussen de damwanden, 'open' zandpakket)



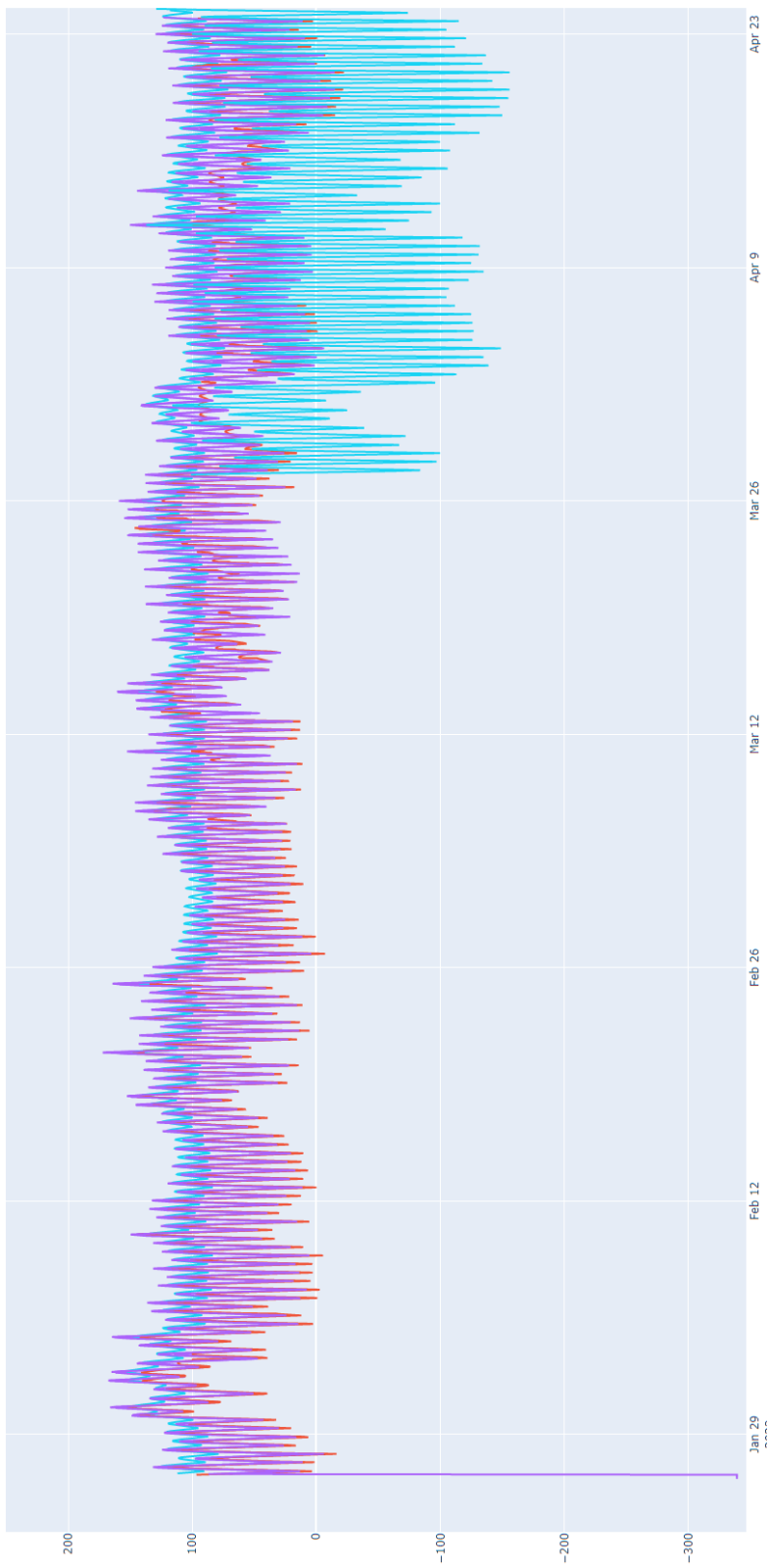
# Waterstanden "tussenlaag" (01-1, 02-1 en HB04)

- HB03.txt
- HB04.txt
- MB01-1.txt
- MB01-2.txt
- MB02-1.txt
- MB02-2.txt
- MB03-1.txt
- MB03-2.txt
- MB04-1.txt
- MB04-2.txt
- MB05-1.txt
- MB05-2.txt
- MB06-1.txt
- MB06-2.txt
- Neerslag per dag.txt
- Waterstand.txt



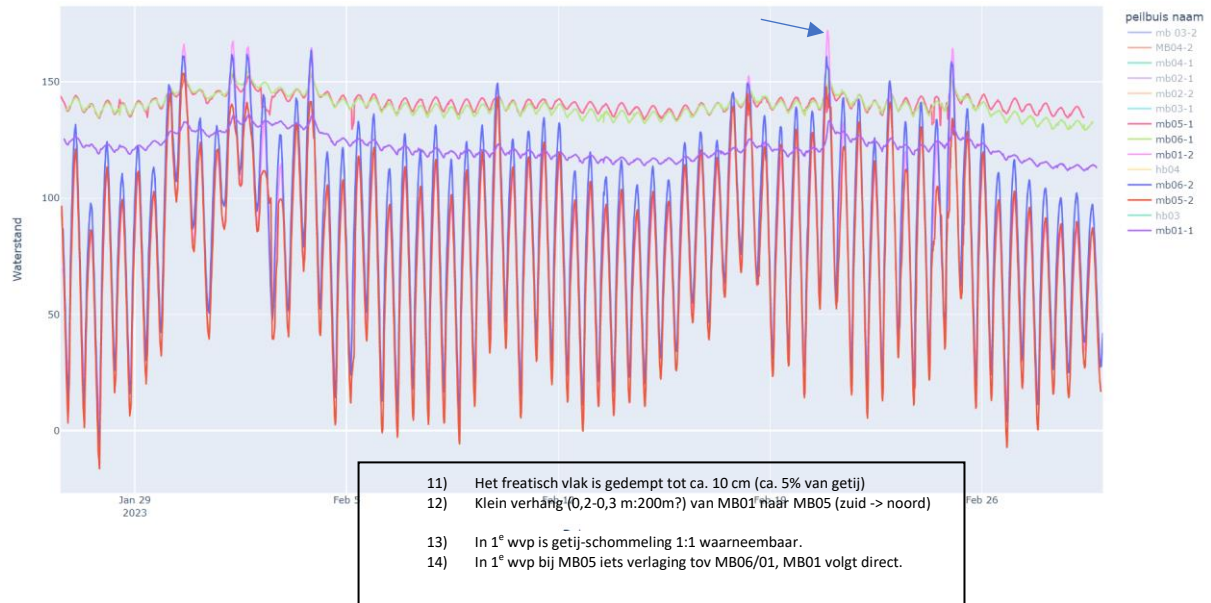
# Waterstanden diepe laag (01-2, 02-2, 06-2 en 05-2)

- HB03.txt
- HB04.txt
- MB01-1.txt
- MB01-2.txt
- MB02-1.txt
- MB02-2.txt
- MB03-1.txt
- MB03-2.txt
- MB04-1.txt
- MB04-2.txt
- MB05-1.txt
- MB05-2.txt
- MB06-1.txt
- MB06-2.txt
- Neerslag per dag.txt
- Waterstand.txt

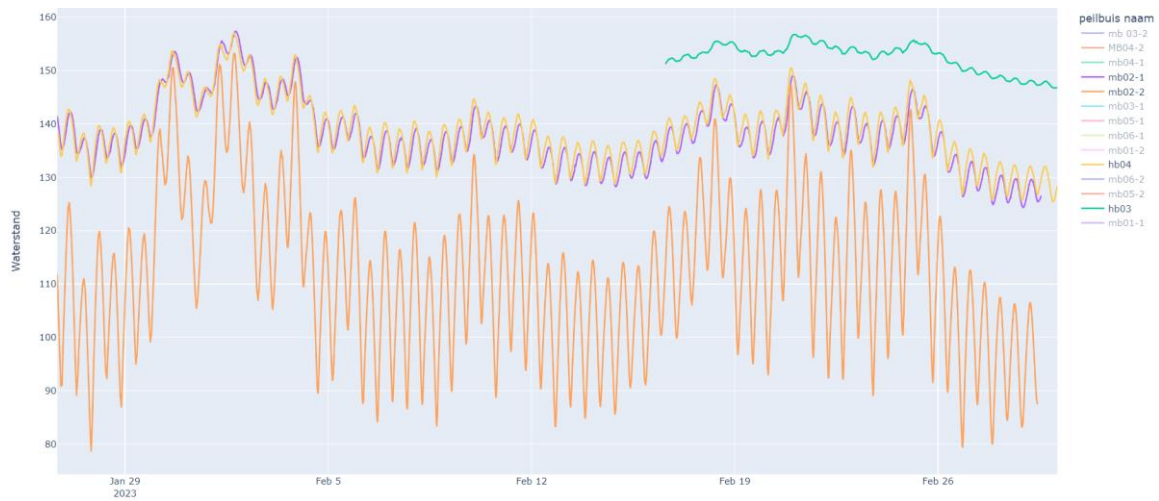


## AD.00216 - Analyse grondwaterstanden WB-kade Terschelling (febr. 2023)

- Rij 1: Diep en ondiep grondwater tussen de damwanden

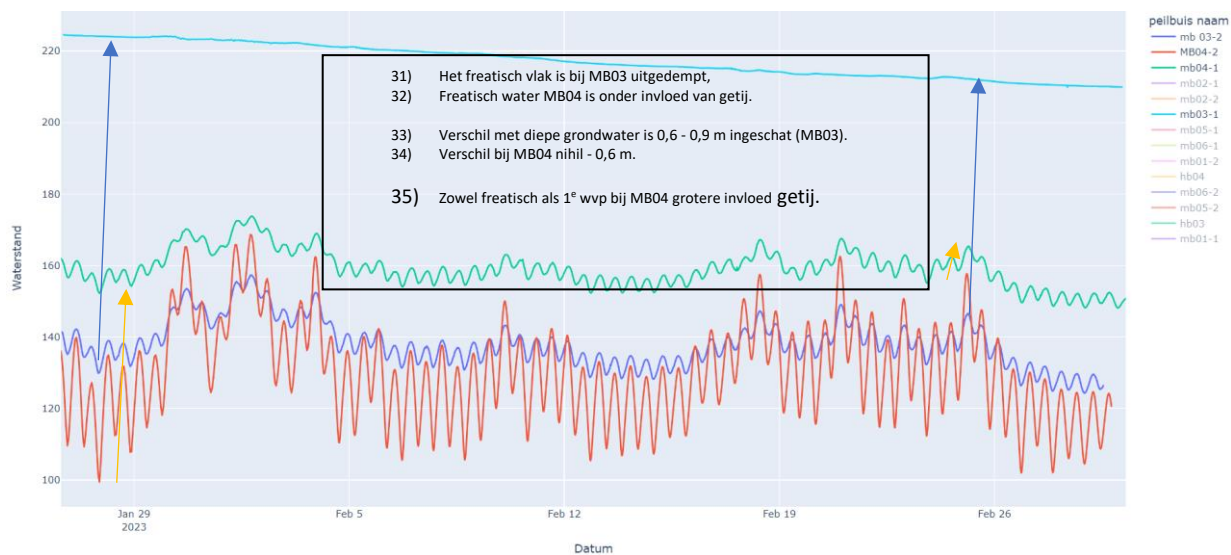


- Rij 2: diep en ondiep grondwater achter de tweede damwand

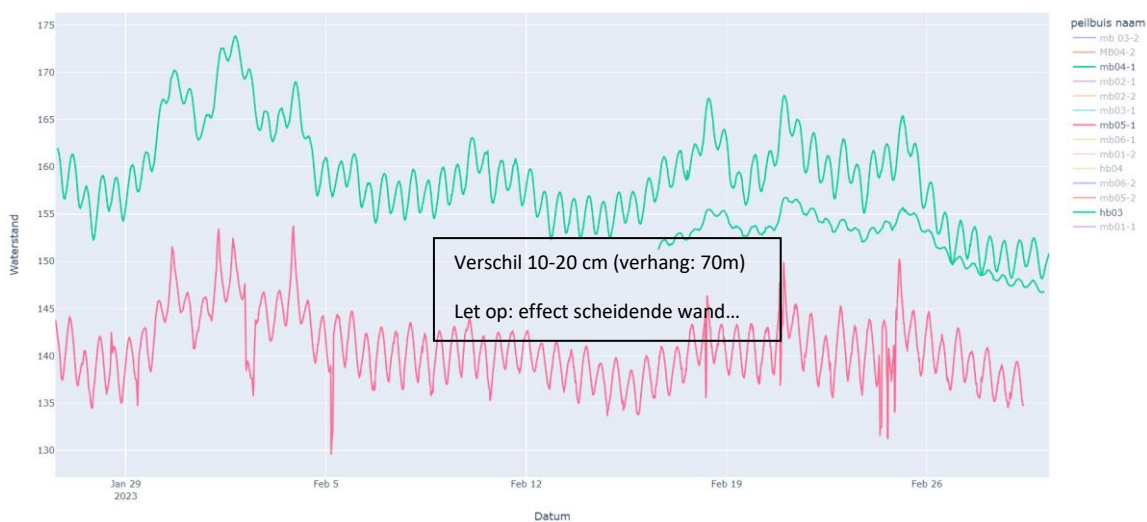


- 21) Freatisch vlak slechts 0,1 m onder invloed van getij.
- 22) Verhang HB03 tot HB-04/MB-02 ca. 0,2 m.
- 23) WVP volgt getij, beweging slechts 0,2-0,5 m. Hier gekkenoeg gedempt...
- 24) LET OP: slechts één meting!

- Rij 3: diep en ondiep grondwater op 70 à 75m vanaf zee



## Raai Noord: diep en ondiep grondwater



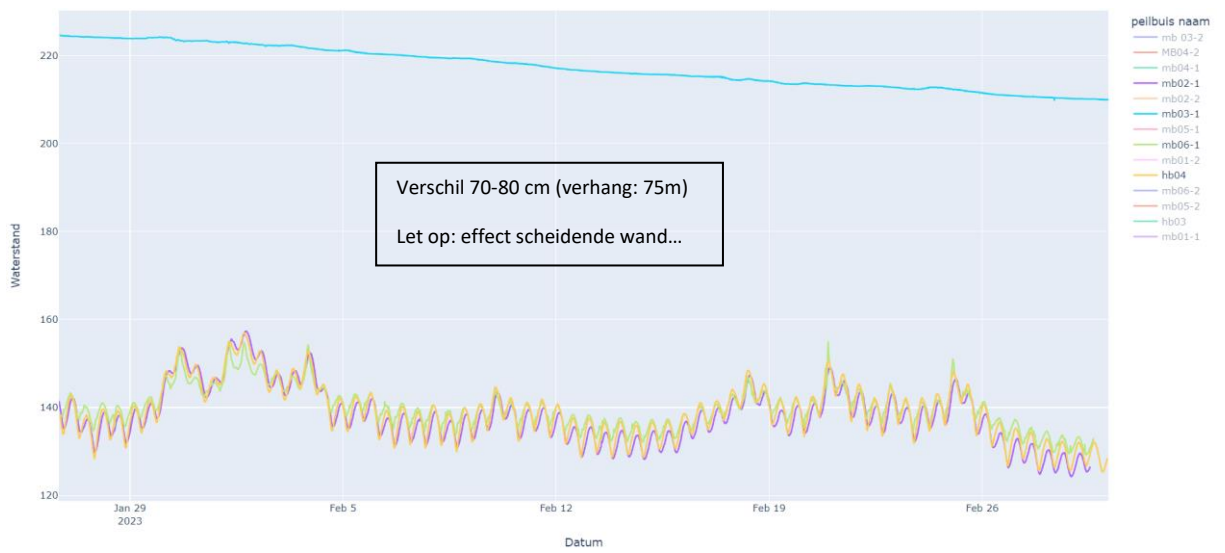
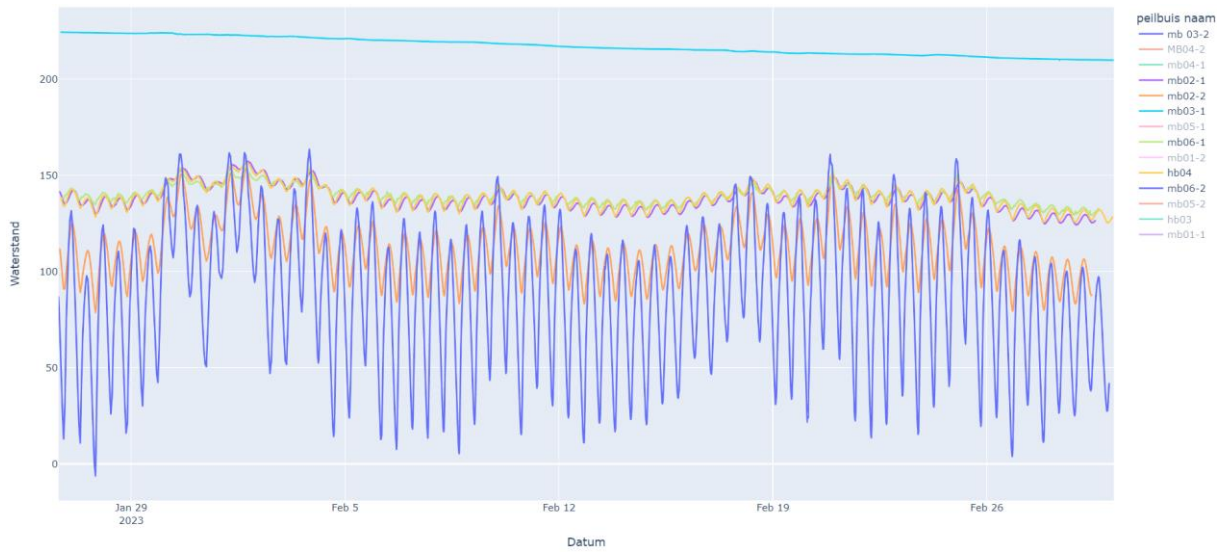
### Ondiep (freatisch waterniveau raai noord)



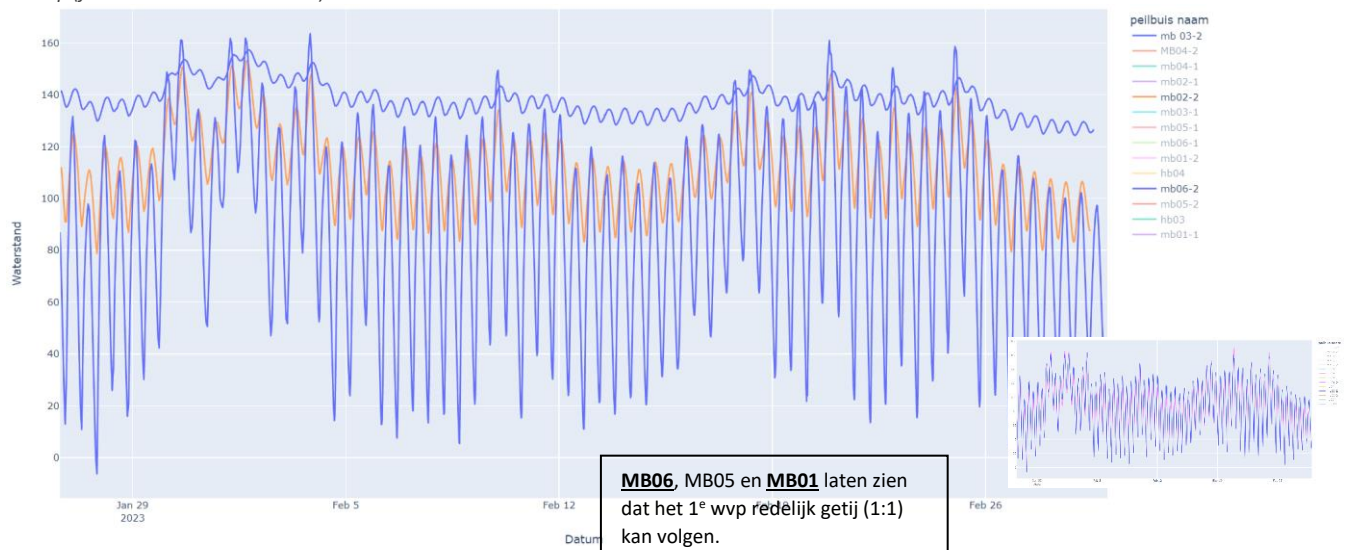
Diep



## Raai midden: diep en ondiep grondwater



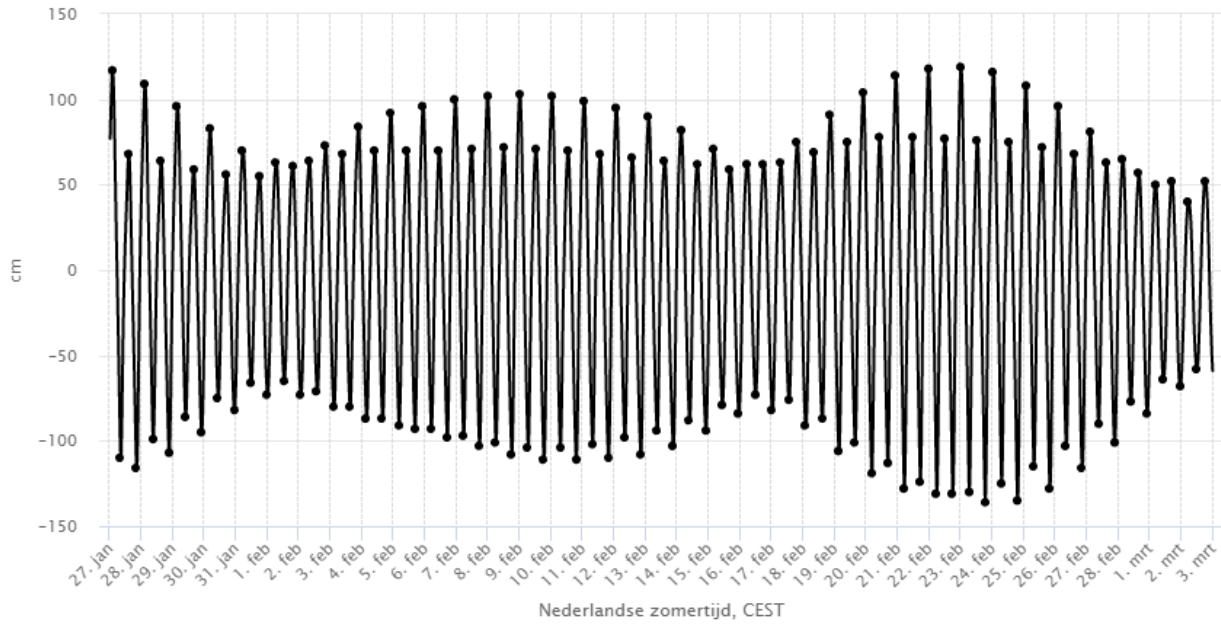
### Ondiep (freatisch water raai midden)



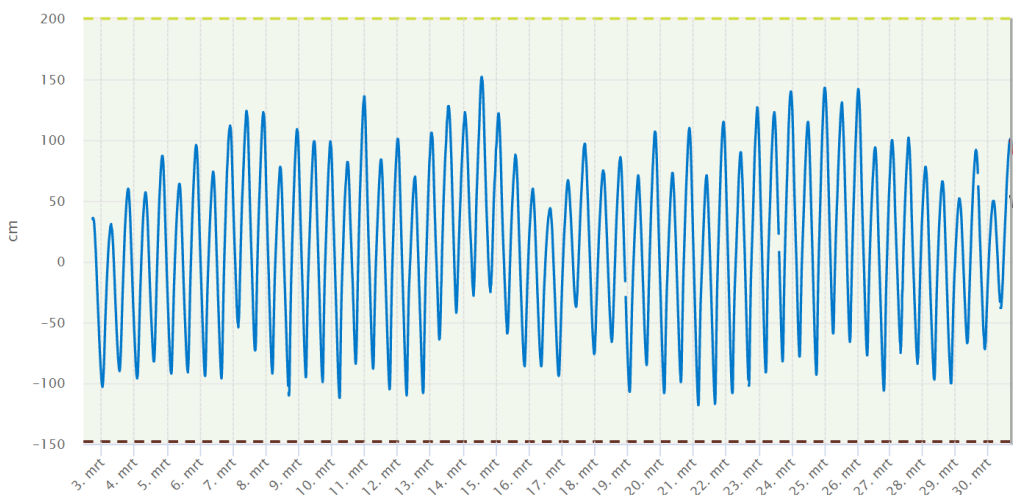
### Diep grondwater

# Waterstanden Waddenzee-West Terschelling (27 jan - 3 mrt)

[Grafiek](#) [Tabel](#) [Hoog-laag](#)  [Expert](#) [Refresh](#) [Opslaan](#) [Export/Delen](#)



— Waterhoogte Astronomisch t.o.v NAP in cm



# West-Terschelling

Hoog- en laagwaterstanden en -tijdstippen

Februari 2023											
datum	uu:mm	HW	LW	datum	uu:mm	HW	LW	datum	uu:mm	HW	LW
		cm	NAP			cm	NAP			cm	NAP
<b>1</b> wo	5:39 11:45 18:12	63 61	-65	<b>11</b> za	0:14 6:38 12:24 18:45	99 68	-102 -110	<b>21</b> di	4:04 10:11 16:16 22:27	78 118	-128 -124
<b>2</b> do	0:25 6:56 12:57 19:22	64 73	-73 -71	<b>12</b> zo	0:46 7:11 12:55 19:21	95 66	-98 -108	<b>22</b> wo	4:49 10:56 16:59 23:12	77 119	-131 -131
<b>3</b> vr	1:40 7:54 13:56 20:14	68 84	-80 -80	<b>13</b> ma LK 17:01	1:21 7:47 13:33 20:03	90 64	-94 -103	<b>23</b> do	5:30 11:37 17:40 23:54	76 116	-130 -136
<b>4</b> za	2:34 8:42 14:43 20:57	70 92	-87 -87	<b>14</b> di	2:03 8:31 14:21 20:53	82 62	-88 -94	<b>24</b> vr	6:10 12:14 18:19	75	-125 -135
<b>5</b> zo VM 19:29	3:17 9:21 15:23 21:33	70 96	-91 -93	<b>15</b> wo	2:59 9:27 15:29 22:01	71 59	-79 -84	<b>25</b> za	0:33 6:47 12:49 18:57	108 72	-115 -128
<b>6</b> ma	3:53 9:54 15:58 22:06	70 100	-93 -98	<b>16</b> do	4:24 10:44 17:04 23:32	62 62	-73 -82	<b>26</b> zo	1:11 7:23 13:24 19:33	96 68	-103 -116
<b>7</b> di	4:27 10:25 16:33 22:39	71 102	-97 -103	<b>17</b> vr	6:01 12:10 18:34	63 75	-76	<b>27</b> ma EK 9:06	1:48 7:57 14:02 20:11	81 63	-90 -101
<b>8</b> wo	5:01 10:56 17:06 23:11	72 103	-101 -108	<b>18</b> za	1:00 7:18 13:31 19:45	69 91	-91 -87	<b>28</b> di	2:28 8:33 14:47 20:55	65 57	-77 -84
<b>9</b> do	5:34 11:26 17:39 23:43	71 102	-104 -111	<b>19</b> zo	2:16 8:23 14:36 20:45	75 104	-106 -101				
<b>10</b> vr	6:07 11:56 18:12	70	-104 -111	<b>20</b> ma NM 8:06	3:14 9:20 15:29 21:38	78 114	-119 -113				

Referentievlak: NAP  
LAT = NAP-148 cm

Nederlandse tijd  
Cursief gedrukte tijdstippen zijn in ZOMERTIJD